

REVISIONS			
BY	DATE	REFERENCE	
BY	4/4/19	Bo Appendix 1	
BY	4/8/19	Bo Appendix 2	

DRAWING BY:	Arch
REVIEWED BY:	R. SHUGAR
PROJECT NO.:	18003
DATE:	3/22/2019
DRAWING TITLE	

WINDOW & DOOR SCHEDULE

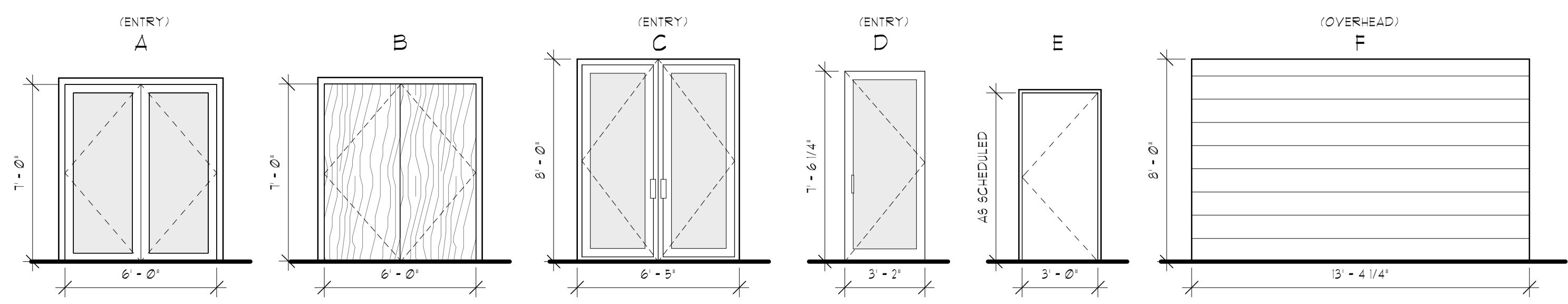
DRAWING NUMBER

**A105**

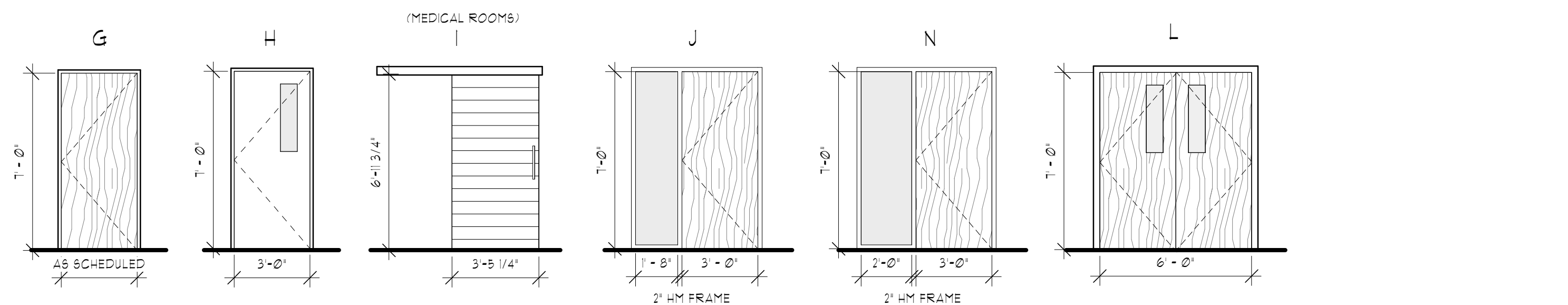
DOOR SCHEDULE							
MARK	WIDTH	HEIGHT	DOOR ELEVATION	DOOR MATERIAL	FRAME MATERIAL	FUNCTION	COMMENTS
101A	6'-0"	7'-0"	A	ALUMINUM	ALUMINUM	ENTRY	STOREFRONT, BLACK ANODIZED
101B	6'-0"	7'-0"	A	ALUMINUM	ALUMINUM	ENTRY	STOREFRONT, BLACK ANODIZED
102A	3'-0"	7'-0"	G	WD/RIFT OAK	HM	ADMIN.	
102B	3'-0"	7'-0"	G	WD/RIFT OAK	HM	STORAGE	
103A	3'-0"	7'-0"	G	WD/RIFT OAK	HM	RECEPTION	
103B	3'-0"	7'-0"	G	WD/RIFT OAK	HM	RECEPTION	
103C	4'-1"	7'-0"	WALL OPENING			RECEPTION	WRAP DRYWALL
103D	4'-1"	7'-0"	WALL OPENING			RECEPTION	WRAP DRYWALL
104A	3'-5 1/4"	6'-11 1/2"	I	MAPLE		ADMIN.	AD SYSTEMS EXAM SLIDE
104B	3'-5 1/4"	6'-11 1/2"	I	MAPLE		ADMIN.	AD SYSTEMS EXAM SLIDE
106	3'-0"	7'-0"	G	WD/PAINT	HM	MECH.	
108	3'-0"	7'-0"	G	WD/RIFT OAK	HM	RESTROOM	
109	3'-0"	7'-0"	G	WD/RIFT OAK	HM	RESTROOM	
110	3'-0"	7'-0"	N	WD/RIFT OAK	HM	ADMIN.	
111	3'-0"	7'-0"	N	WD/RIFT OAK	HM	ADMIN.	
112	3'-0"	7'-0"	N	WD/RIFT OAK	HM	ADMIN.	
113	3'-0"	7'-0"	N	WD/RIFT OAK	HM	ADMIN.	
114A	6'-0"	7'-0"	L	WD/RIFT OAK	HM	HALLWAY	
114B	3'-0"	7'-0"	G	WD/RIFT OAK	HM	BREAK RM	
114C	6'-0"	7'-0"	L	WD/RIFT OAK	HM	HALLWAY	
115	3'-0"	7'-0"	G	WD/RIFT OAK	HM	MEDICAL	
117	3'-5 1/4"	6'-11 1/2"	I	MAPLE		MEDICAL	AD SYSTEMS EXAM SLIDE
118	3'-5 1/4"	6'-11 1/2"	I	MAPLE		MEDICAL	AD SYSTEMS EXAM SLIDE
119	3'-5 1/4"	6'-11 1/2"	I	MAPLE		MEDICAL	AD SYSTEMS EXAM SLIDE
120	3'-5 1/4"	6'-11 1/2"	I	MAPLE		MEDICAL	AD SYSTEMS EXAM SLIDE
121	3'-5 1/4"	6'-11 1/2"	I	MAPLE		MEDICAL	AD SYSTEMS EXAM SLIDE
122	3'-0"	7'-0"	G	WD/RIFT OAK	HM	RESTROOM	
123	3'-0"	7'-0"	G	WD/RIFT OAK	HM	OFFICE	
125	3'-5 1/4"	6'-11 1/2"	I	MAPLE		MEDICAL	AD SYSTEMS EXAM SLIDE
126	3'-5 1/4"	6'-11 1/2"	I	MAPLE		MEDICAL	AD SYSTEMS EXAM SLIDE
127	3'-0"	7'-0"	G	WD/RIFT OAK	HM	OFFICE	
128	3'-5 1/4"	6'-11 1/2"	I	MAPLE		MEDICAL	AD SYSTEMS EXAM SLIDE
129	3'-5 1/4"	6'-11 1/2"	I	MAPLE		MEDICAL	AD SYSTEMS EXAM SLIDE
130	3'-0"	7'-0"	G	WD/PAINT	HM	LAUNDRY	
131	3'-5 1/4"	6'-11 1/2"	I	MAPLE		MEDICAL	AD SYSTEMS EXAM SLIDE
132A	6'-0"	7'-0"	B	WD/RIFT OAK	HM	STORAGE	FLUSH SQUARE LIGHT MOULDING, FINISH TO MATCH FINISH OF OVERHEAD DOOR
132B	3'-0"	7'-0"	G	WD/PAINT	HM	STORAGE	
133A	3'-0"	7'-0"	G	WD/RIFT OAK	HM	MEDICAL	
133B	3'-5 1/4"	6'-11 1/2"	I	MAPLE		MEDICAL	AD SYSTEMS EXAM SLIDE
134A	6'-0"	7'-0"	L	WD/RIFT OAK	HM	HALLWAY	
135	3'-5 1/4"	6'-11 1/2"	I	MAPLE		MEDICAL	AD SYSTEMS EXAM SLIDE
137	3'-5 1/4"	6'-11 1/2"	I	MAPLE		MEDICAL	AD SYSTEMS EXAM SLIDE
138	3'-5 1/4"	6'-11 1/2"	I	MAPLE		MEDICAL	AD SYSTEMS EXAM SLIDE
139	3'-5 1/4"	6'-11 1/2"	I	MAPLE		MEDICAL	AD SYSTEMS EXAM SLIDE
140	3'-5 1/4"	6'-11 1/2"	I	MAPLE		MEDICAL	AD SYSTEMS EXAM SLIDE
141	3'-0"	7'-0"	G	WD/RIFT OAK	HM	OFFICE	
142	3'-0"	7'-0"	G	WD/RIFT OAK	HM	RESTROOM	
143	3'-5 1/4"	6'-11 1/2"	I	MAPLE		MEDICAL	AD SYSTEMS EXAM SLIDE
144	3'-5 1/4"	6'-11 1/2"	I	MAPLE		MEDICAL	AD SYSTEMS EXAM SLIDE
145	3'-5 1/4"	6'-11 1/2"	I	MAPLE		MEDICAL	AD SYSTEMS EXAM SLIDE
146	3'-5 1/4"	6'-11 1/2"	I	MAPLE		MEDICAL	AD SYSTEMS EXAM SLIDE
147	3'-0"	7'-0"	G	WD/RIFT OAK	HM	OFFICE	
148A	3'-0"	7'-0"	C	ALUMINUM	ALUMINUM	ENTRY	STOREFRONT
148B	3'-0"	7'-0"	H	WD/RIFT OAK	HM	BACK LOBBY	FLUSH SQUARE LIGHT MOULDING
149	3'-5 1/4"	6'-11 1/2"	I	MAPLE		MEDICAL	AD SYSTEMS EXAM SLIDE
150	3'-0"	7'-0"	G	WD/PAINT	HM	STORAGE	
151B	3'-0"	7'-0"	G	WD/PAINT	HM	ADMIN.	
152	3'-0"	7'-0"	G	WD/RIFT OAK	HM	ADMIN.	
153A	3'-0"	6'-8"	E	METAL	HM	ENTRY	(E) MTL DOOR TO BE REFINISHED, FINISH TO MATCH FINISH OF OVERHEAD DOORS
153B	10'-0"	7'-0"	F	METAL		ROLL UP	
154	3'-0"	7'-0"	E	METAL	HM	F8 RISER	
155A	3'-0"	7'-0"	G	MAPLE	HM	HALLWAY	
155B	3'-0"	7'-0"	J	WD/RIFT OAK	HM	OFFICE	
155C	3'-0"	7'-0"	D	HM	HM	ENTRY	FINISH TO MATCH WINDOW FINISH
156	3'-0"	7'-0"	E	METAL	HM	ENTRY	(E) MTL DOOR TO BE REFINISHED, FINISH TO MATCH FINISH OF OVERHEAD DOORS
157	3'-5 1/4"	6'-11 1/2"	I	MAPLE		CALL CENTER	AD SYSTEMS EXAM SLIDE
158	3'-0"	7'-0"	N	WD/RIFT OAK	HM	OFFICE	
161	3'-0"	7'-0"	G	WD/PAINT	HM	STORAGE	
162	3'-0"	7'-0"	G	WD/PAINT	HM	NURSING RM	
163	3'-0"	7'-0"	G	WD/RIFT OAK	HM	RESTROOM	

DOOR SCHEDULE							
MARK	WIDTH	HEIGHT	DOOR ELEVATION	DOOR MATERIAL	FRAME MATERIAL	FUNCTION	COMMENTS
163A	2'-10"	7'-0"	G	WD/RIFT OAK	HM	WMNS SHOWER	
165	3'-0"	7'-0"	G	WD/RIFT OAK	HM	RESTROOM	
165A	2'-10"	7'-0"	G	WD/RIFT OAK	HM	MENS SHOWER	
201	3'-0"	7'-0"	G	WD/RIFT OAK	HM	ADMIN.	
202	3'-0"	7'-0"	G	WD/RIFT OAK	HM	RESTROOM	
203	3'-0"	7'-0"	N	WD/RIFT OAK	HM	OFFICE	
204	3'-0"	7'-0"	N	WD/RIFT OAK	HM	ADMIN.	
205	3'-0"	7'-0"	N	WD/RIFT OAK	HM	ADMIN.	
206	3'-0"	7'-0"	N	WD/RIFT OAK	HM	OFFICE	
207	3'-0"	7'-0"	G	WD/RIFT OAK	HM	RESTROOM	
208	6'-0"	7'-0"	L	WD/RIFT OAK	HM	HALLWAY	
209	3'-5 1/4"	6'-11 1/2"	I	MAPLE		MEDICAL	AD SYSTEMS EXAM SLIDE
210	3'-5 1/4"	6'-11 1/2"	I	MAPLE		MEDICAL	AD SYSTEMS EXAM SLIDE
211	3'-5 1/4"	6'-11 1/2"	I	MAPLE		MEDICAL	AD SYSTEMS EXAM SLIDE
212	3'-5 1/4"	6'-11 1/2"	I	MAPLE		MEDICAL	AD SYSTEMS EXAM SLIDE
213	3'-5 1/4"	6'-11 1/2"	I	MAPLE		MEDICAL	AD SYSTEMS EXAM SLIDE
214	3'-0"	7'-0"	G	WD/RIFT OAK	HM	OFFICE	
215	3'-0"	7'-0"	G	WD/RIFT OAK	HM	OFFICE	
216	3'-0"	7'-0"	G	WD/RIFT OAK	HM	OFFICE	
217	3'-0"	7'-0"	G	WD/PAINT	HM	STORAGE	
218	3'-5 1/4"	6'-11 1/2"	I	MAPLE		MEDICAL	AD SYSTEMS EXAM SLIDE
219	3'-5 1/4"	6'-11 1/2"	I	MAPLE		MEDICAL	AD SYSTEMS EXAM SLIDE
220	3'-5 1/4"	6'-11 1/2"	I	MAPLE		MEDICAL	AD SYSTEMS EXAM SLIDE
221	3'-5 1/4"	6'-11 1/2"	I	MAPLE		MEDICAL	AD SYSTEMS EXAM SLIDE
222	3'-0"	7'-0"	G	WD/RIFT OAK	HM	RESTROOM	
224	6'-0"	7'-0"	L	WD/RIFT OAK	HM	HALLWAY	
226	3'-0"	7'-0"	G	WD/RIFT OAK	HM	RESTROOM	
228	3'-5 1/4"	6'-11 1/2"	I	MAPLE		MEDICAL	AD SYSTEMS EXAM SLIDE
229	3'-5 1/4"	6'-11 1/2"	I	MAPLE		MEDICAL	AD SYSTEMS EXAM SLIDE
230	3'-5 1/4"	6'-11 1/2"	I	MAPLE		MEDICAL	AD SYSTEMS EXAM SLIDE
231	3'-5 1/4"	6'-11 1/2"	I	MAPLE		MEDICAL	AD SYSTEMS EXAM SLIDE
232	3'-5 1/4"	6'-11 1/2"	I	MAPLE		MEDICAL	AD SYSTEMS EXAM SLIDE
233	3'-0"	7'-0"	G	WD/RIFT OAK	HM	OFFICE	
234	3'-0"	7'-0"	G	WD/PAINT	HM	OFFICE	
235	3'-5 1/4"	6'-11 1/2"	I	MAPLE		MEDICAL	AD SYSTEMS EXAM SLIDE
236	3'-5 1/4"	6'-11 1/2"	I	MAPLE		MEDICAL	AD SYSTEMS EXAM SLIDE
237	3'-0"	7'-0"	G	WD/RIFT OAK	HM	OFFICE	
238	3'-5 1/4"	6'-11 1/2"	I	MAPLE		MEDICAL	AD SYSTEMS EXAM SLIDE
239	3'-5 1/4"	6'-11 1/2"	I	MAPLE		OFFICE	AD SYSTEMS EXAM SLIDE
240	3'-5 1/4"	6'-11 1/2"	I	MAPLE		OFFICE	AD SYSTEMS EXAM SLIDE
242	2'-10"	7'-0"	G	WD/RIFT OAK	HM	OFFICE	
243	3'-0"	7'-0"	G	WD/RIFT OAK	HM	RESTROOM	
245	3'-0"	7'-0"	G	WD/RIFT OAK	HM	RESTROOM	
247A	3'-0"	7'-0"	G	WD/RIFT OAK	HM	CONFERENCE	
247B	2'-0"	9'-0"	WALL OPENING			CONFERENCE	WRAP DRYWALL
248A	3'-0"	7'-0"	G	WD/RIFT OAK	HM	CONFERENCE	
248F	3'-0"	7'-0"	WALL OPENING			CONFERENCE	
249A	3'-0"	7'-0"	G	WD/RIFT OAK	HM	CONFERENCE	
249B	2'-0"	9'-0"	WALL OPENING			CONFERENCE	WRAP DRYWALL
250	2'-8"	7'-0"	G	WD/RIFT OAK	HM	STORAGE	
251	3'-0"	7'-0"	G	WD/RIFT OAK	HM	RESTROOM	
252A	3'-0"	7'-0"	G	WD/RIFT OAK	HM	RECEPTION	
252B	3'-0"	7'-0"	G	WD/RIFT OAK	HM	RECEPTION	
252C	3'-11"	7'-0"	WALL OPENING			RECEPTION	WRAP DRYWALL
253D	3'-11"	7'-0"	WALL OPENING			RECEPTION	WRAP DRYWALL
258A	3'-0"	7'-0"	G	WD/PAINT	HM	HALLWAY	
259B	3'-0"	7'-0"	G	WD/RIFT OAK	HM	HALLWAY	
265A	3'-0"	7'-0"	H	WD/RIFT OAK	HM	STAIR	FLUSH SQUARE LIGHT MOULDING
266B	3'-0"	6'-8"	E	METAL	HM	ROOFTOP EXIT	(E) MTL DOOR TO BE REFINISHED, FINISH TO MATCH FINISH OF OVERHEAD DOORS
M1	3'-0"	6'-8"	E	METAL	HM	MECH.	(E) MTL DOOR TO BE REFINISHED, FINISH TO MATCH FINISH OF OVERHEAD DOORS
S1	3'-0"	7'-0"	E	METAL	HM	STAIR	(E) MTL DOOR TO BE REFINISHED, FINISH TO MATCH FINISH OF OVERHEAD DOORS
S2	3'-0"	6'-8"	E	METAL	HM	STAIR	(E) MTL DOOR TO BE REFINISHED, FINISH TO MATCH FINISH OF OVERHEAD DOORS

WINDOW + RELITE SCHEDULE					
TYPE	COUNT	TYPE	HEIGHT	WIDTH	COMMENTS
A	14	PICTURE	8'-9"	5'-3 1/2"	HEAD HEIGHT 9'-0", TYP.
B	26	PICTURE	6'-3"	5'-3 1/2"	HEAD HEIGHT 9'-0", TYP.
C	52	PICTURE	2'-6"	5'-3 1/2"	HEAD HEIGHT 9'-0", TYP.
D	17	PICTURE	6'-4 3/4"	5'-3 1/2"	HEAD HEIGHT 9'-0", TYP.
E	26	PICTURE	3'-10 3/4"	5'-3 1/2"	HEAD HEIGHT 9'-0", TYP.
F	1	PICTURE	5'-6"	5'-3 1/2"	HEAD HEIGHT 9'-0", TYP.
G	2	PICTURE	5'-3 1/2"	5'-3 1/2"	HEAD HEIGHT 9'-0", TYP.
H	3	PICTURE	8'-8 3/4"	4'-0"	HEAD HEIGHT 9'-0", TYP.
I	2	PICTURE	8'-9"	4'-6"	HEAD HEIGHT 9'-0", TYP.
J	2	PICTURE	8'-9"	7'-0"	HEAD HEIGHT 9'-0", TYP.
K	1	PICTURE	6'-4 3/4"	7'-0"	HEAD HEIGHT 9'-0", TYP.
L	2	PICTURE	6'-4 3/4"	4'-0"	HEAD HEIGHT 9'-0", TYP.
M	1	PICTURE	8'-1 3/4"	5'-3"	HEAD HEIGHT 9'-0", TYP.
N	2	RELITE	1'-6"	5'-3"	HEAD HEIGHT: SEE INTERIOR ELEVATIONS
O	3	RELITE	1'-6"	5'-4"	HEAD HEIGHT: SEE INTERIOR ELEVATIONS
P	46	RELITE	1'-6"	6'-6 1/2"	HEAD HEIGHT: SEE INTERIOR ELEVATIONS
Q	18	RELITE	3'-0"	3'-0"	HEAD HEIGHT: SEE INTERIOR ELEVATIONS
R	10	RELITE	1'-6"	3'-3"	HEAD HEIGHT: SEE INTERIOR ELEVATIONS
S	3	RELITE	3'-9"	4'-9"	HEAD HEIGHT: SEE INTERIOR ELEVATIONS



EXTERIOR DOORS



INTERIOR DOORS